



High quality  
Grade A serviced  
accommodation in  
the heart of London's  
financial district

# LEADENHALL

107 LEADENHALL STREET, LONDON, EC3A 4AF

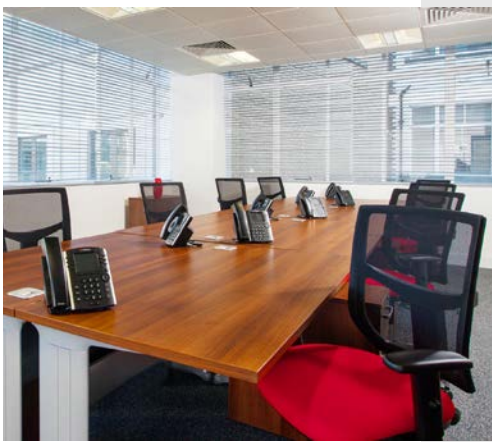




## Space available from 2 to 300 desks

Leadenhall is a newly refurbished period Grade A building situated in the centre of the City of London's insurance district. The common areas of the building boast many art deco features, with glazed partitions fitted to a high standard, full height walnut doors and high specification kitchens.

The building is in close proximity to Lloyds of London, the Gherkin, and Leadenhall Market as well as tube stations providing access to Circle, District, Central, Northern, Hammersmith and City and Metropolitan lines and National rail services.



## The accommodation benefits from:

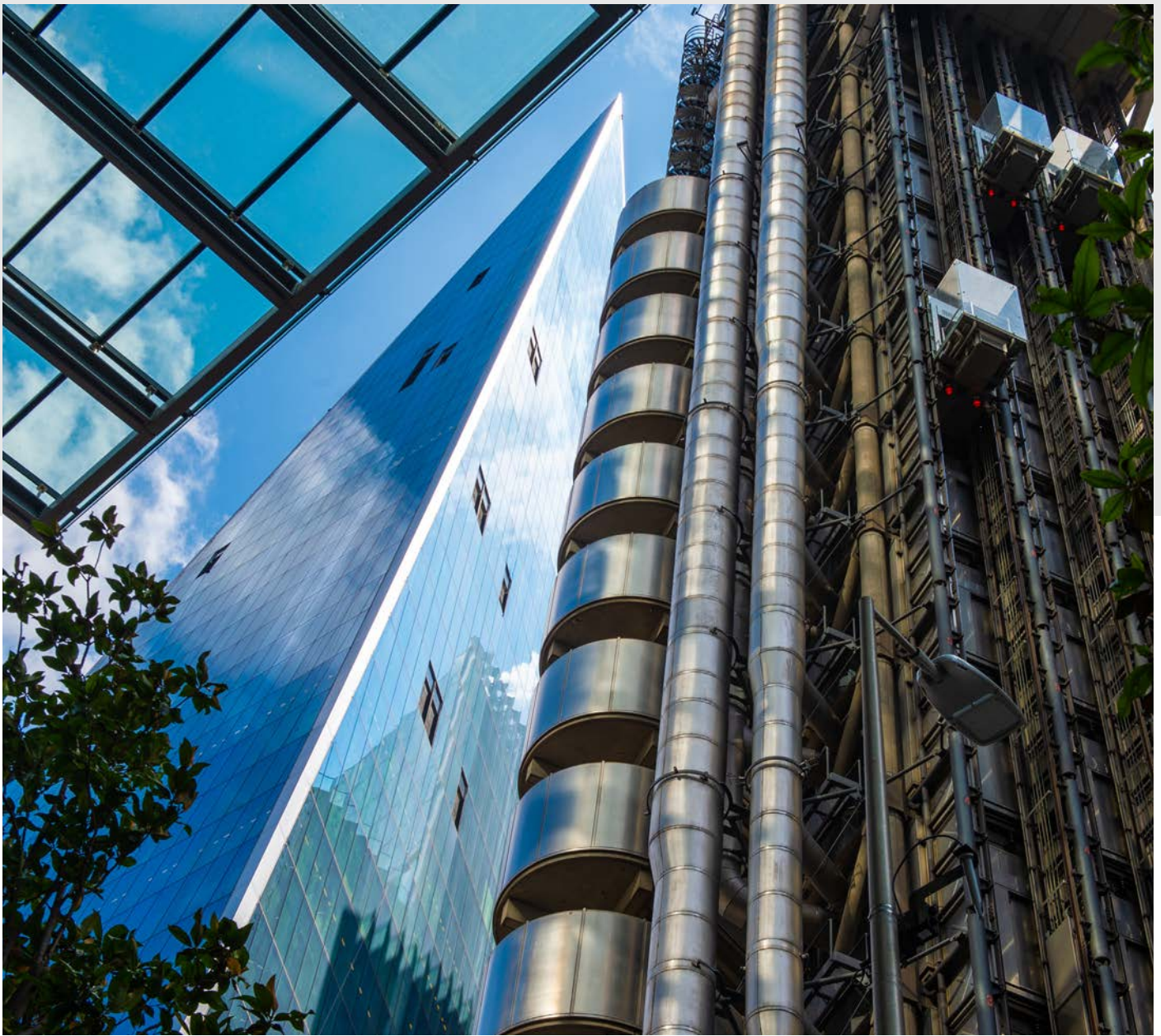
- Attractive Ground Floor Reception
- Experienced On-Site Reception/Support Team
- 24 Hour Security, 7 Days A Week
- Fully Air-Conditioned Office Suites
- Multiple Breakout and Lounge Areas
- Kitchen Areas on each Floor
- Hireable Meeting Rooms (8 Person)
- Visitor Waiting Area
- High Speed Internet Connection
- CCTV Monitoring
- Shower Facilities
- Toilets on every Floor
- 10 Person Passenger Lift
- Access to all 9 sites










## Local amenities include:

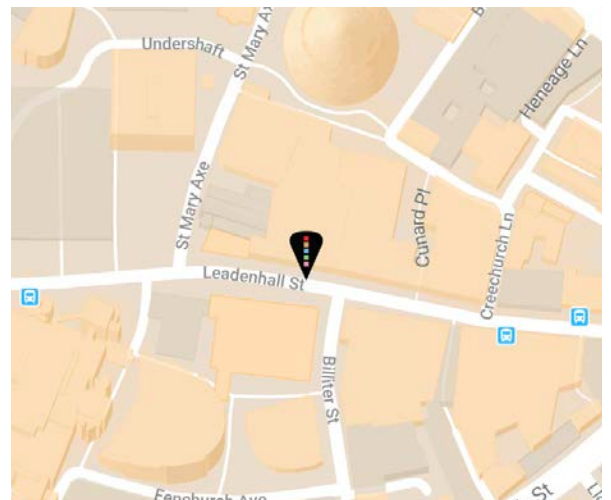
Lloyds of London 120yd, the Gherkin 0.1mi, Leadenhall Building 0.1mi, Leadenhall Market 0.2mi, Double Tree by Hilton Hotels 0.3mi, Old Spitalfields Market 0.7mi





**NEAREST STATIONS**

			
Fenchurch Street 	4mins	4mins	-
Bank 	6mins	7mins	9mins
Monument 	7mins	4mins	-
Liverpool Street 	8mins	4mins	8mins



For further details please contact  
 Andrew Butler, Chief Operating Officer:  
[andrew@prospectbc.com](mailto:andrew@prospectbc.com)  
 07506 023 091